



VECTOR® ILUMINACIÓN

ILUMINAMOS TU MUNDO

FICHA TÉCNICA

LÁMPARA COLGANTE 2C60W-C

LÁMPARAS COLGANTES



TECNOLOGÍA LED



VECTOR® ILUMINACIÓN

ILUMINAMOS TU MUNDO

FICHA TÉCNICA

LÁMPARA COLGANTE 2C60W-C

LÁMPARA COLGANTE



MODELO 2C60W-C

VECTOR® ILUMINACIÓN Av. Cuauhtémoc Mz. 268 Lt. 1 entre Sur 9 y Sur 10, Col. Niños
Héroes, Valle de Chalco, Estado de Mex. C.P. 56610 Teléfonos: 01(55)62821515, 01(55)62834188



MODELO 2C60W-C

Ficha Técnica

Modelo	Marca	Consumo	Intensidad Luminosa	Vida del LED	Tipo de iluminación	Angulo de dispersión	Temperatura del color
2C60W-C	Vector	60 W	12800 Lumen (a 2Amp DC)	50,000 hrs	Circular	140°x 140°	5500 - 6500 k

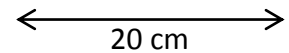
Alimentación	Tipo de LED	Sistema de enfriamiento
120 VCA 240 VCA	Chip LED Class A Epistar 45 mil	Interno: retardador de temperatura Externo : Aletas ventiladas



Aplicaciones: **Domos de canchas de básquet, fútbol rápido, Domos de parques municipales, bodegas, etc.**



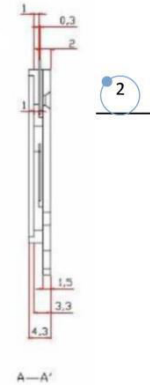
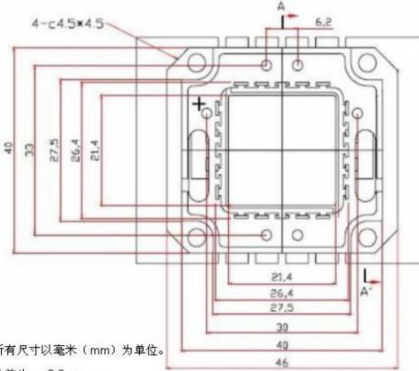
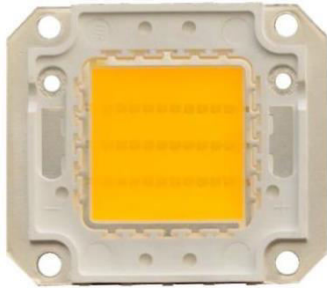
50 cm



20 cm



Información del LED



Notes:

- 1. → 所有尺寸以毫米 (mm) 为单位。
- 2. → 公差为: ±0.2mm。

➤ Absolute Maximum Rating (At TA=25°C)

Parameter	Symbol	Ratings	Units
Power Dissipation(功率)	P _D	1500	mW
Continuous Forward Current	I _F	1050	mA
Peak Forward Current * 1	I _{FP}	1300	mA
Reverse Voltage	V _R	5	V
Thermal Resistance Junction To Board	R _{ΘJ-B}	/	°C/W
Operating Temperature Range	T _{OPR}	-30°C To +60°C	
Storage Temperature Range	T _{STG}	-40°C To +80°C	
Manual Soldering Temperature	T _{SOL}	260°C ± 10°C For 3~5 Seconds	
ESD Sensitivity	ESD	4000V HBM	

➤ Electrical/Optical Characteristics (At T_A=25°C)(光电参数)

Parameter	Symbol	Condition	Min.	Typ.	Max.	Unit
Luminous Flux (发光强度)	Φ	I _F =700mA	3500	4000	4500	LM
Forward Voltage (正向压降)	V _F	I _F =700mA	30		34	V
Color temperature	TC	I _F =700mA	6000	6500	7000	K
Reverse Current (反向漏电流)	I _R	V _F =5V	0	---	100	uA
Viewing Angle ^[1] (发光角度)	2Θ _{1/2}	I _F =700mA	--	140	--	Deg



Fig.1 Relative intensity vs. Wavelength

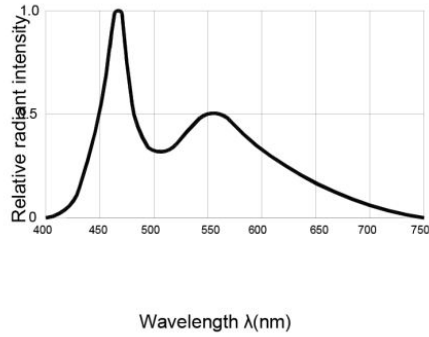


Fig.2 Forward current derating curve vs. Ambient temperature

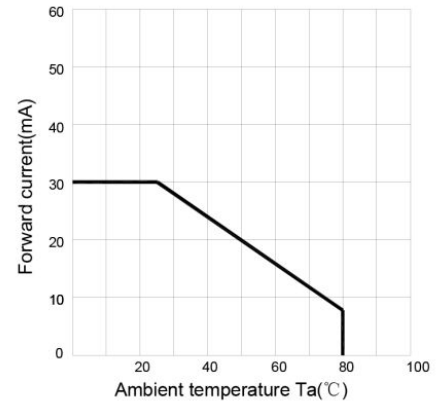


Fig.3 Forward current vs. Forward voltage

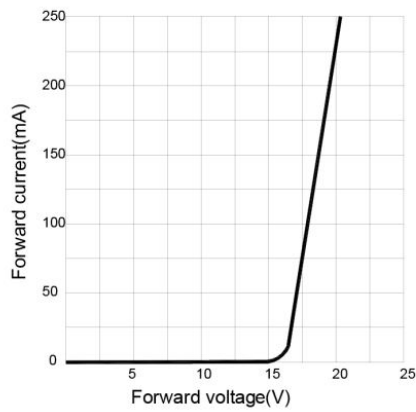


Fig.4 Relative luminous intensity vs. Ambient temperature

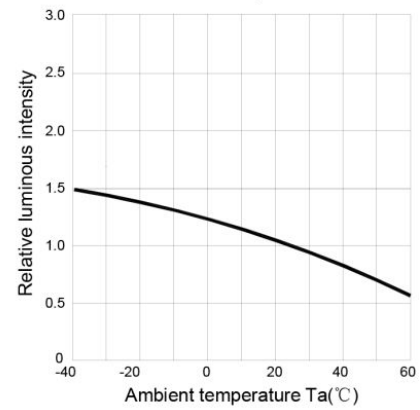


Fig.5 Relative luminous intensity vs. Forward current

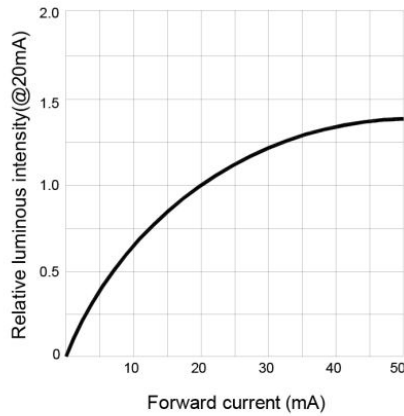
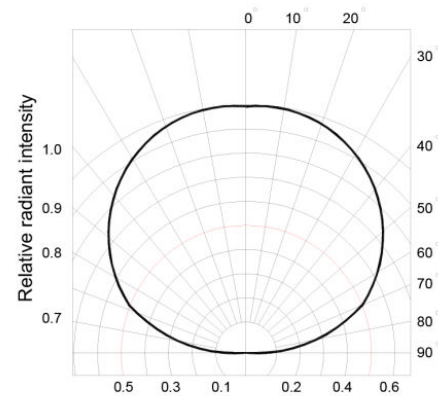


Fig.6 Radiation diagram





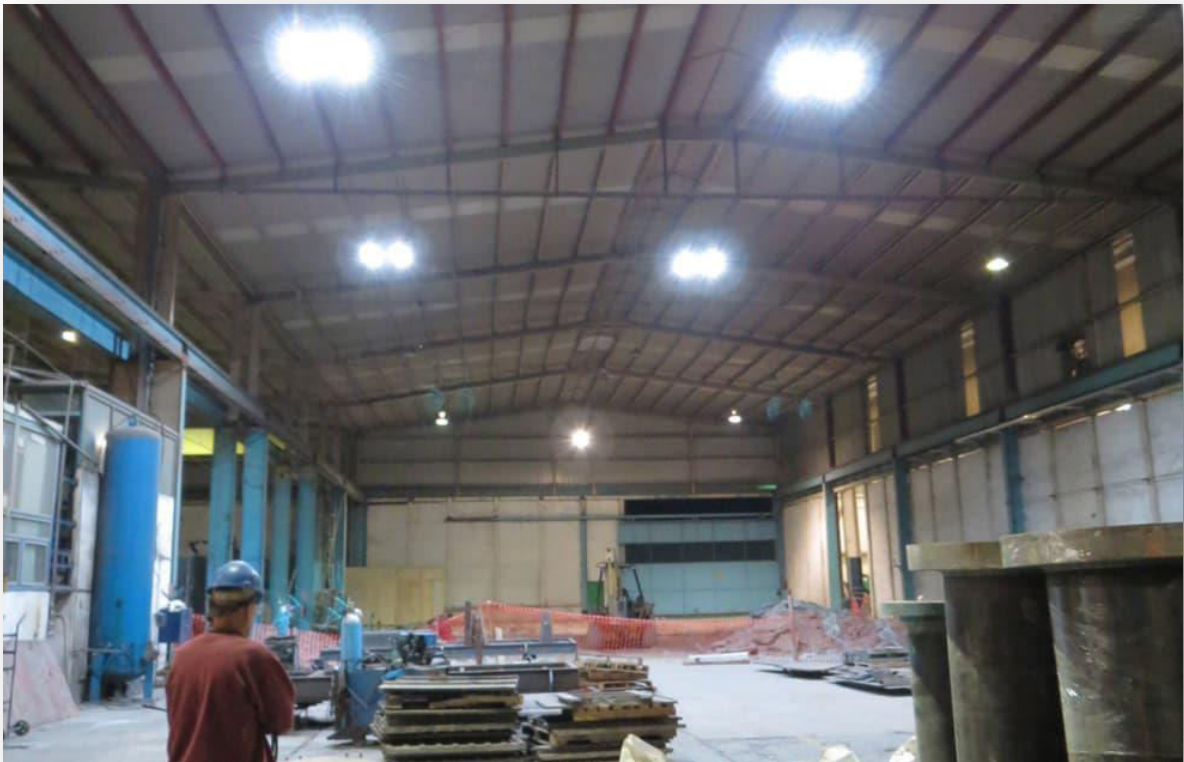
VECTOR® ILUMINACIÓN

ILUMINAMOS TU MUNDO

FICHA TÉCNICA

LÁMPARA COLGANTE 2C60W-C

LÁMPARA COLGANTE 60W



VECTOR® ILUMINACIÓN Av. Cuauhtémoc Mz. 268 Lt. 1 entre Sur 9 y Sur 10, Col. Niños
Héroes, Valle de Chalco, Estado de Mex. C.P. 56610 Teléfonos: 01(55)62821515, 01(55)62834188